



***The Arc***<sup>TM</sup>

*Kent County*

## ***The Assurance Plan***

***Achieve with us.***

For people with intellectual and developmental disabilities

*Achieve with us.*



The mission of The Arc Kent County is to ensure that people with intellectual and developmental disabilities are valued in order that they and their families participate fully in and contribute to their community.

*The Arc Kent County is an affiliate of The Arc Michigan & The Arc United States*

For people with intellectual and developmental disabilities

*Achieve with us.*



**For family members and others interested in a comprehensive Lifetime Advocacy Program. Many parents ask: “What will happen to my child when I’m gone?”**

The Assurance Plan (APLAN) offers;

- formal and comprehensive plan of lifetime advocacy
- consistent follow-up on the individual’s lifestyle while securing appropriate services for persons with intellectual impairment and/or other developmental disabilities
- designed to meet the needs of the individual by utilizing all available community resources
- a flexible **Assurance Service Plan (ASP)** will be developed based on the needs of the participant and his/her family

For people with intellectual and developmental disabilities

*Achieve with us.*



**The APLAN exists to offer and provide a sense of security to parents and families when they themselves become disabled or are unable to handle their own affairs.**

When a parent of a participant has passed away, or when they wish to have additional assistance now, the Assurance Plan will collaborate with the individual and their family members in a consultative capacity. The APLAN will ensure consistent follow-up and advocacy as needed.

For people with intellectual and developmental disabilities

*Achieve with us.*



Oversight of the Assurance Plan will be accomplished by a committee of the Board of Directors of The Arc Kent County. The program is open to Kent County residents only.



For people with intellectual and developmental disabilities



A person-centered assurance plan should reflect the wishes of the person with I/DD, as well as his or her parents, siblings, extended family members and friends, and other important people in his or her life. The plan should include information about all aspects of a person's life including:

- Daily routines, needs and supports
- Living arrangements
- Finances, including the family and person's public benefits, assets, incomes, trusts, insurance policies
- Doctors' contact information and information about the person's medical history (including any medications and food allergies)
- Decision-making support
- Education history
- Details about the person's employment, leisure activities, religious beliefs, behaviors, interests, friendships, and other important relationships

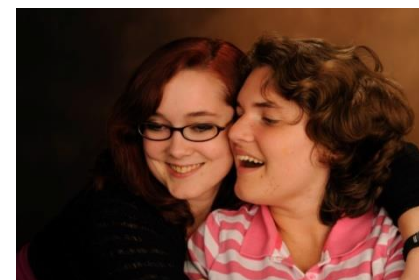
For people with intellectual and developmental disabilities

*Achieve with us.*



**Examples of Advocacy – Areas where the Assurance Plan could provide assistance:**

- Retain professional investment counsel to manage the trust funds
- Serve as a Representative Payee for governmental benefits
- Attend Person-Centered-Planning (PCP) meetings
- Attend work-place status and evaluation meetings
- Visit group home or other community and residential settings
- Monitor Social Security or Supplemental Security Income matters
- Monitor medical-dental concerns



For people with intellectual and developmental disabilities

*Achieve with us.*



**Examples of Advocacy – Areas where the Assurance Plan could provide assistance continued:**

- Provide outreach advocacy in areas such as: transportation, recreation, and human rights
- Monitor Michigan Department of Human services programs (e.g., Medicaid, Home Help Services)
- Maintain extended family contact
- Document all activities; maintain up to date records and files
- Mediate issues with service providers
- Other appropriate services as needed for the individual



For people with intellectual and developmental disabilities



# A Family's Financial Responsibility



- To enroll in the Assurance Plan, the family of a participant must join and maintain a membership with The Arc Kent County. The ongoing work of this organization is vital to the continued strength of the Assurance Plan.
- The costs for enrollment and continuing Assurance Plan services will be agreed upon in the Assurance Service Plan (ASP). Families are encouraged to remember the Assurance Plan in their estate planning.
- The staff of The Arc Kent County can offer suggestions as to how this can be done.



*Achieve with us.*



**The Arc**

*Kent County*

2922 Fuller Ave., Ste. 201  
Grand Rapids, MI 49505

Patt Clement  
tammy@arckent.org

[WWW.ARCKENT.ORG](http://WWW.ARCKENT.ORG)

Find Us On



For people with intellectual and developmental disabilities